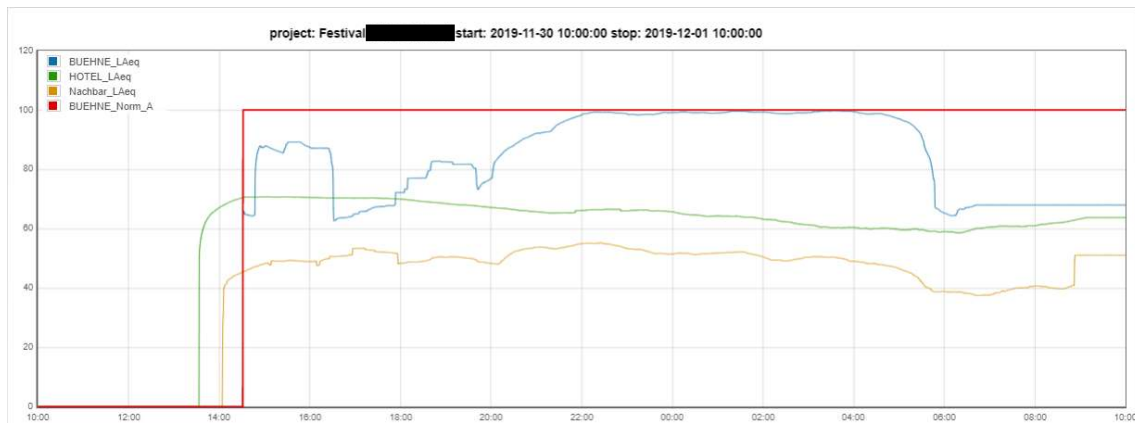
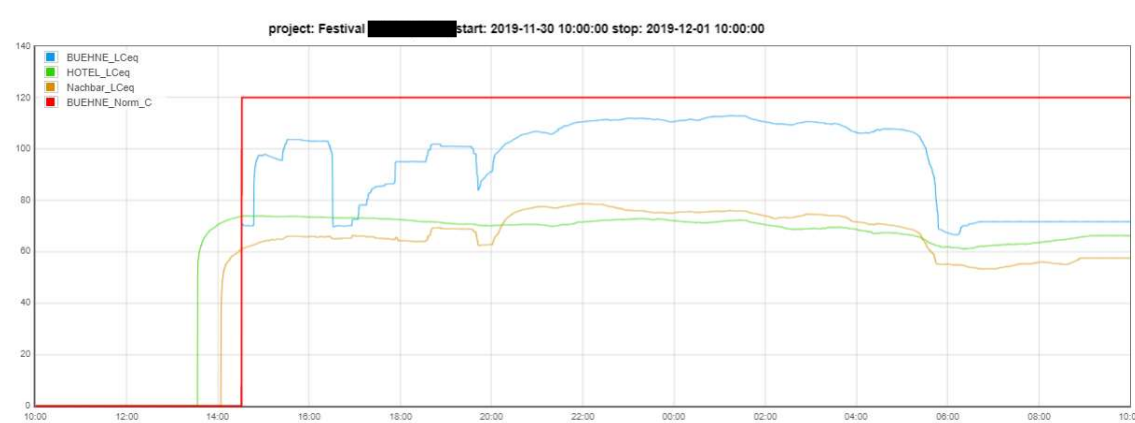


## LAeq levels e



## LCeq levels



## dB\_C levels

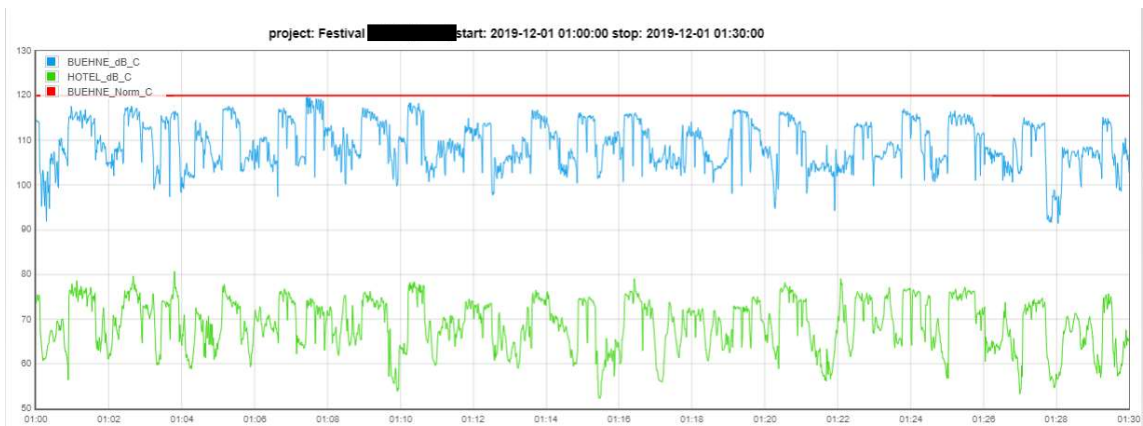


There is a strong relation with the event the relation with the Nachbarn is less strong with Hotel.

The next graph shows this

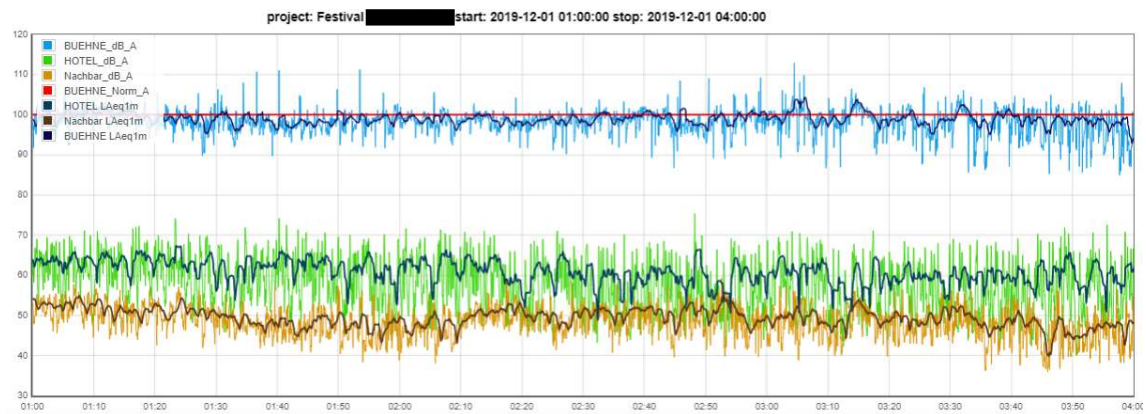


When its gets louder there is again a strong relations ship with hotel this is between 01:00-01:30



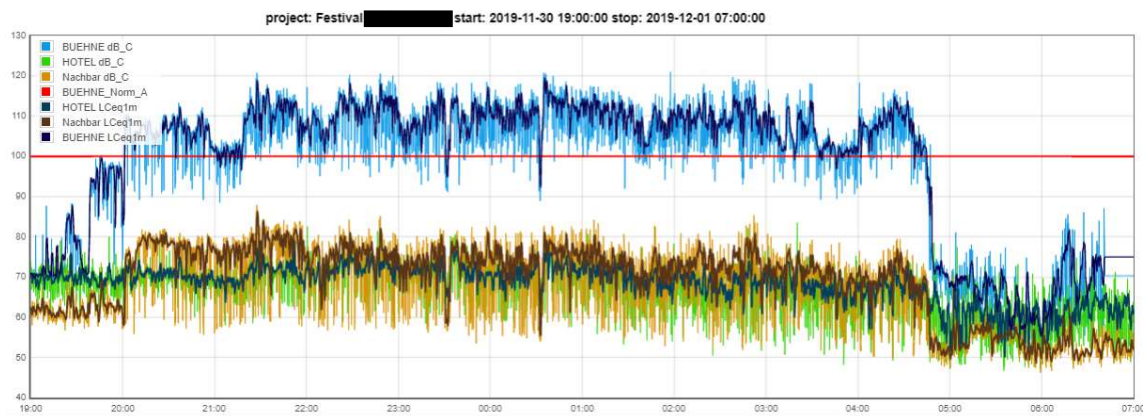
As you work with 1 hour average the LAeq and LCEq are straight lines. In the next figures I used the LAeq and LCEq 1 min lines than you see the relation better.

Laeq 1 min





At the Hotel there was another sound source



The dbc relation

Statistical values

Project	Festival	start	2019-11-30 19:00:00	stop	2019-12-01 07:00:00	LAeq Calc	LA99	LA95	LA90	LA50	LA10	LA5	LA1	recordcount
<b>Rolename</b>	<b>LAeq</b>													
BUEHNE	97.2	12.6	50.7	57.4	64.1	96.3	100.6	101.5	103.8	42082				
HOTEL	64.1	40.1	43.6	47.3	49.8	61.3	68.1	69.5	71.6	43200				
Nachbar	50.9	49.1	33.1	35.2	36.9	48.2	55	56.1	58.4	43200				
<b>Rolename</b>	<b>LCeq</b>													
BUEHNE	109.1	0	55.7	61.4	66.9	103.8	114	115.8	118.2	42082				
HOTEL	70	65.7	49.7	53.5	56.4	67.5	73.9	75.2	77.8	43200				
Nachbar	74.3	73.1	48.8	50.9	52.7	67.6	79.1	80.4	82.9	43200				

Corrected immission values



They show at the hotel that that actual levels caused by the event are a little lower then measured at this location especially the dB(A) level.